

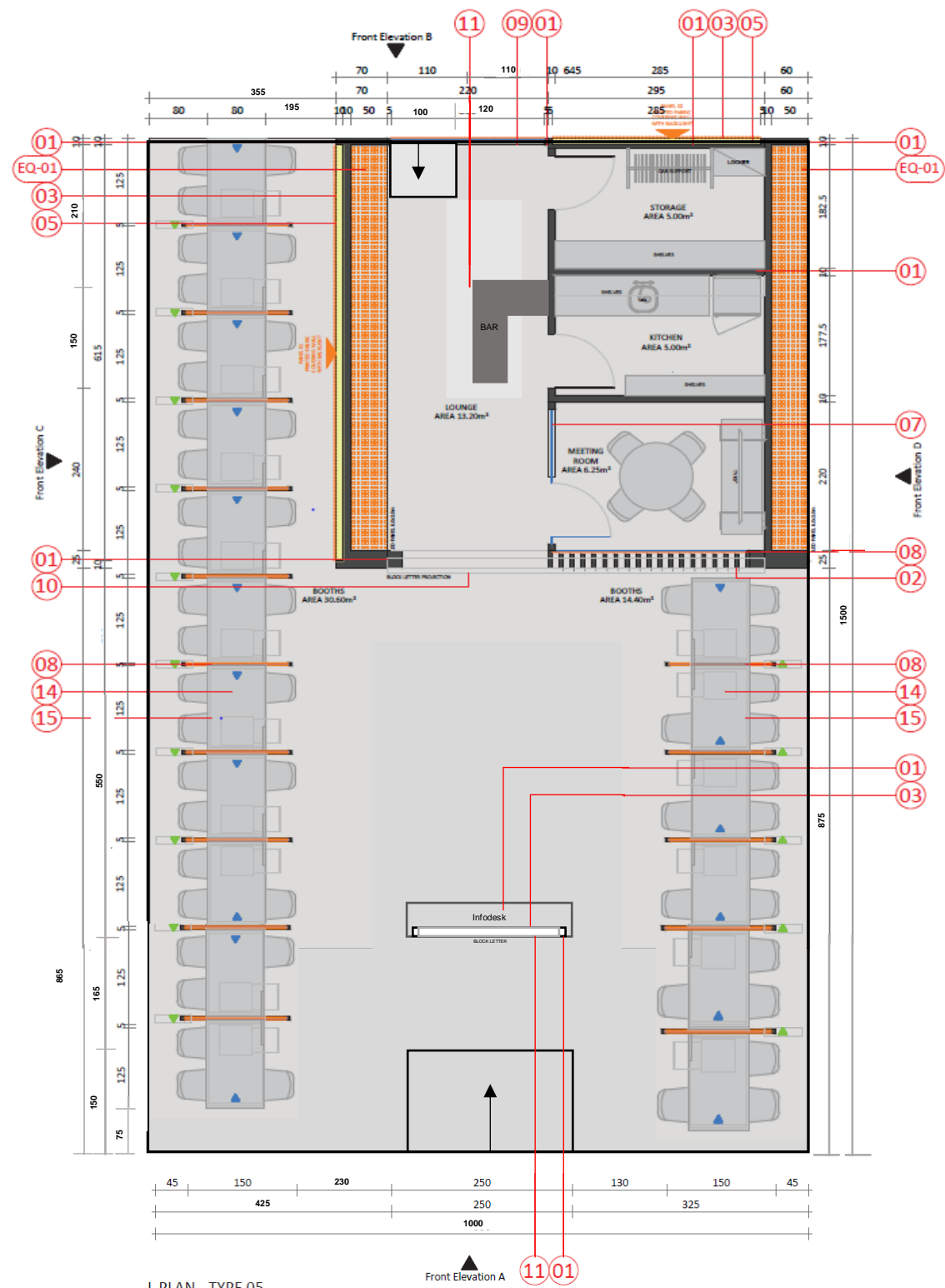
ANEXO I – PROYECTO (PROJECT / STAND LAYOUT)

17 work stations

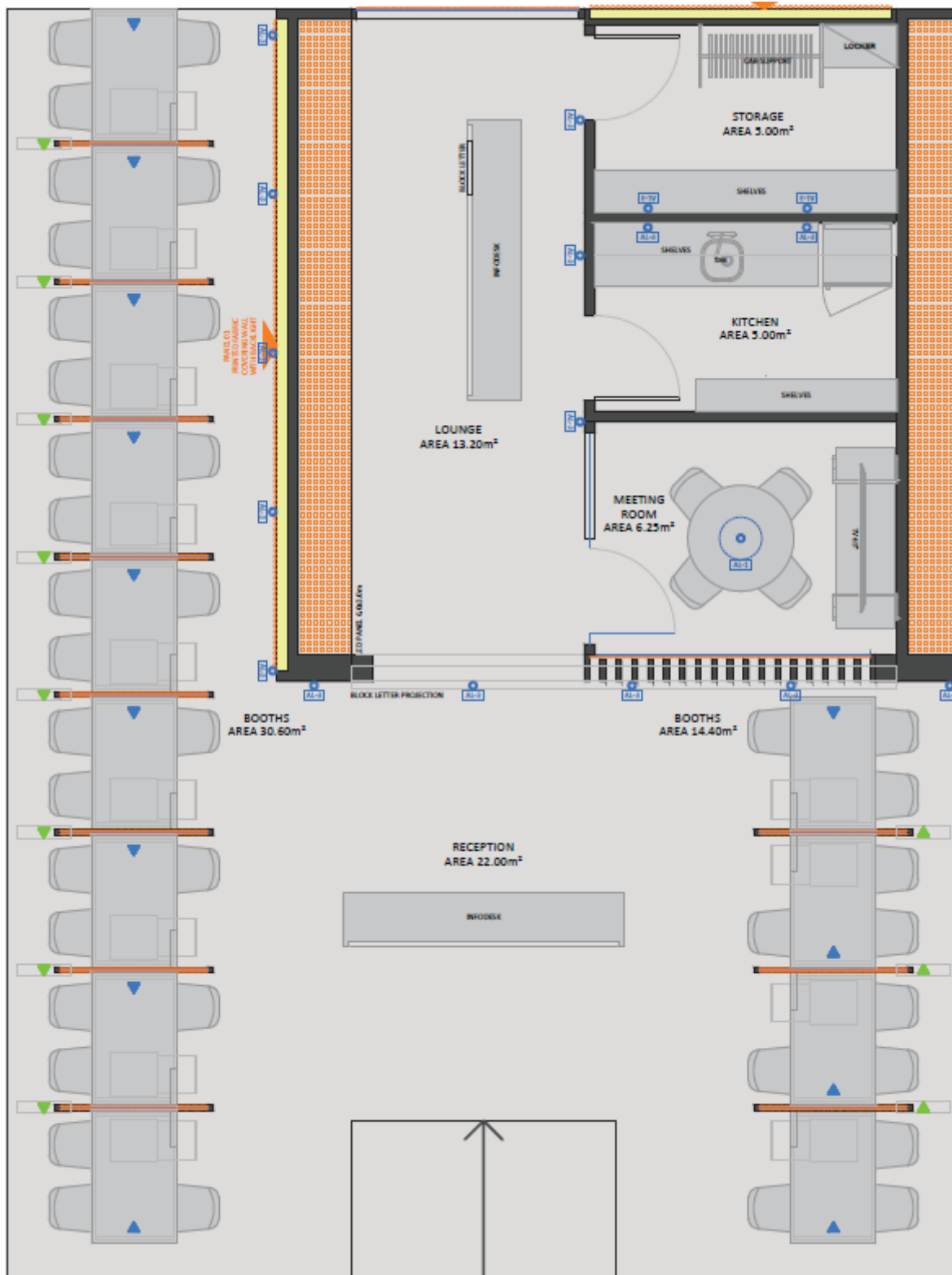
MAIN PLAN

SPECIFICATIONS:

01	Modular system structure (preferably BeMatrix system, or similar) that uses in its structural system frame with aluminum profiles of at least 62mm wide and its superior multiples. Finishing cover in rigid panel must be fastened with velcro tape over the modular structure. Finishing cover in reforestation pinus plywood panel with varnish finishing or MDF sheet with colored melamin finishing.
02	Brise-soleil in modular system structure (preferably BeMatrix system, or similar) that uses in its structural system frame with aluminum profiles of at least 62mm wide and its superior multiples. Finishing cover in rigid panel must be fastened with velcro tape over the modular structure. Finishing cover in reforestation pinus plywood panel with varnish finishing or MDF sheet with colored melamin finishing.
03	Panel for visual communication in digital printed fabric covering with silicone border for attachment to the modular system.
04	Metal grid with pins capable of holding objects hanging over it.
05	Backlight illumination system.
06	Green wall with bulky artificial foliage compatible with the modular frame system wall.
07	Modular system structure (preferably BeMatrix system, or similar) that uses in its structural system frame with aluminum profiles of at least 62mm wide and its superior multiples. Finishing cover in rigid panel must be fastened with velcro tape over the modular structure. Finishing cover in glass or acrylic panels.
08	Modular system structure (preferably BeMatrix system, or similar) that uses in its structural system frame with aluminum profiles of at least 62mm wide and its superior multiples. Finishing cover in rigid panel must be fastened with velcro tape over the modular structure. Finishing in screens with acoustic protection with weft in printed electronic cutout adhesive on glass or acrylic panels.
09	Modular system structure (preferably BeMatrix system, or similar) that uses in its structural system frame with aluminum profiles of at least 62mm wide and its superior multiples. Finishing cover in rigid panel must be fastened with velcro tape over the modular structure. Finishing in screens with weft in printed electronic cutout adhesive on glass or acrylic panels.
10	Block letter with backlight integrated.
11	Block letter in electronic cutout.
12	Floor in reforestation pinus plywood panel with varnish finishing.
13	Floor in MDF sheets with colored melamin finishing.
14	Cabinet IKEA BEKANT Storage unit with smart lock, mesh white 41x61 cm
15	Wooden desk with white melamin finishing.
EQ-01	LED panel compatible with modular frame system wall.
EQ-01	Floor outlet
EQ-01	Furniture outlet
EQ-01	Wall outlet
EQ-01	Network access point
EQ-01	Pendent lamp (see specification)
EQ-01	Pendent lamp (see specification)
EQ-01	Spot light (see specification)



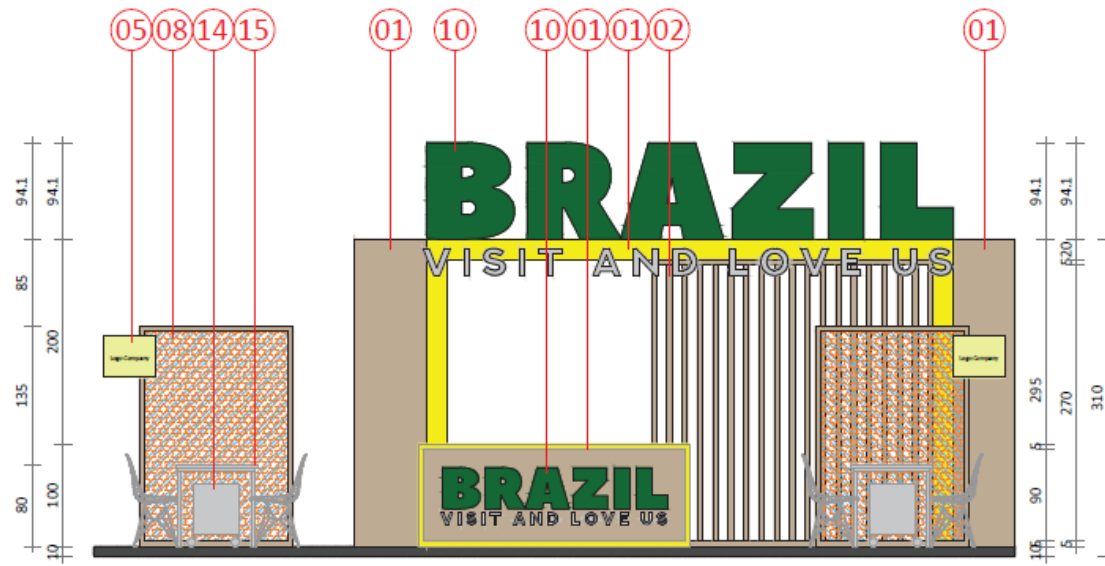
PLAN - TYPE 05



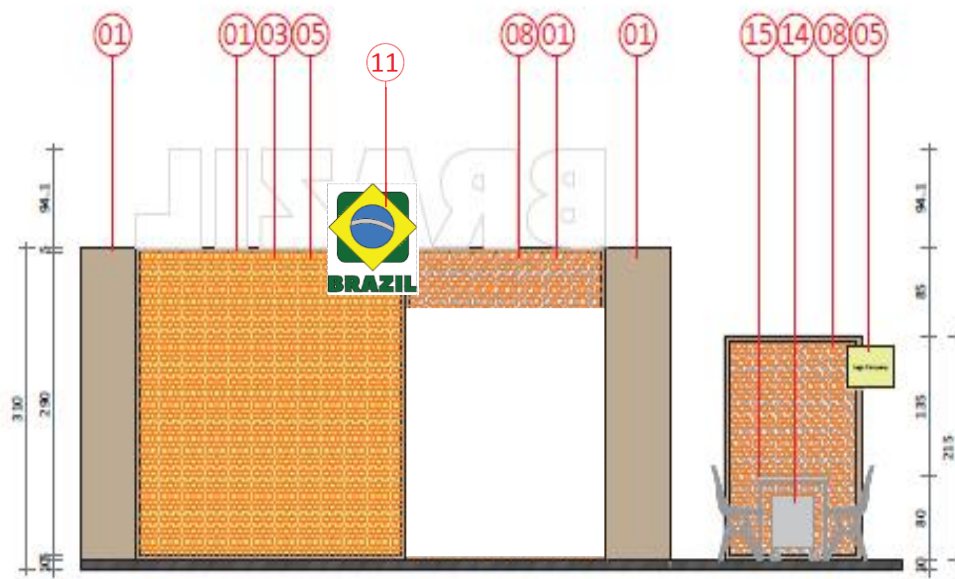
ILUMINATION PLAN

SPECIFICATIONS:

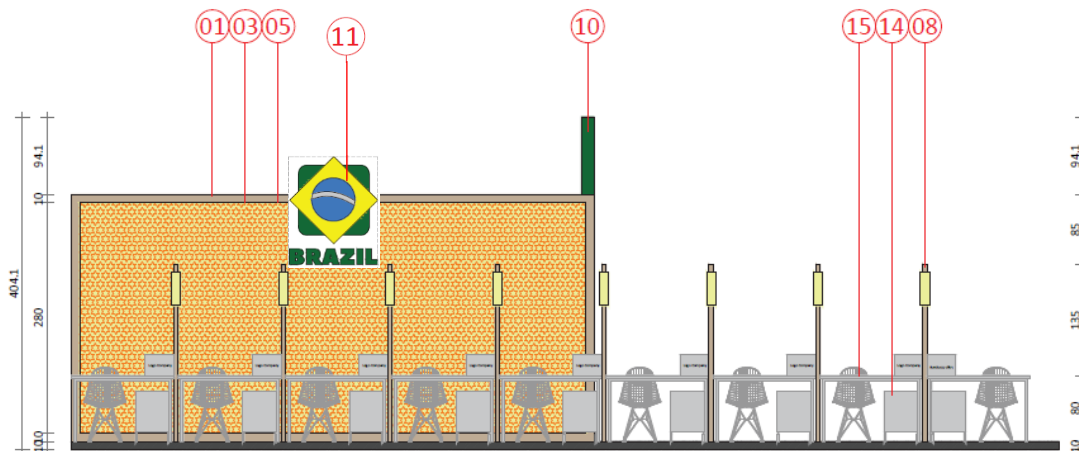
01	Modular system structure (preferably BeMatrix system, or similar) that uses in its structural system frame with aluminum profiles of at least 52mm wide and its superior multiples. Finishing cover in rigid panel must be fastened with velcro tape over the modular structure. Finishing cover in reforestation pinus plywood panel with varnish finishing or MDF sheet with colored melamin finishing.
02	Brise-soleil in modular system structure (preferably BeMatrix system, or similar) that uses in its structural system frame with aluminum profiles of at least 52mm wide and its superior multiples. Finishing cover in rigid panel must be fastened with velcro tape over the modular structure. Finishing cover in reforestation pinus plywood panel with varnish finishing or MDF sheet with colored melamin finishing.
03	Panel for visual communication in digital printed fabric covering with silicone border for attachment to the modular system.
04	Metal grid with pins capable of holding objects hanging over it.
05	Backlight illumination system.
06	Green wall with bulky artificial foliage compatible with the modular frame system wall.
07	Modular system structure (preferably BeMatrix system, or similar) that uses in its structural system frame with aluminum profiles of at least 52mm wide and its superior multiples. Finishing cover in rigid panel must be fastened with velcro tape over the modular structure. Finishing cover in glass or acrylic panels.
08	Modular system structure (preferably BeMatrix system, or similar) that uses in its structural system frame with aluminum profiles of at least 52mm wide and its superior multiples. Finishing cover in rigid panel must be fastened with velcro tape over the modular structure. Finishing in screens with acoustic protection with weft in printed electronic cutout adhesive on glass or acrylic panels.
09	Modular system structure (preferably BeMatrix system, or similar) that uses in its structural system frame with aluminum profiles of at least 52mm wide and its superior multiples. Finishing cover in rigid panel must be fastened with velcro tape over the modular structure. Finishing in screens with weft in printed electronic cutout adhesive on glass or acrylic panels.
10	Block letter with backlight integrated.
11	Block letter in electronic cutout.
12	Floor in reforestation pinus plywood panel with varnish finishing.
13	Floor in MDF sheets with colored melamin finishing.
14	Cabinet IKEA BEKANT Storage unit with smart lock, mesh white 41x61 cm
15	Wooden desk with white melamin finishing.
EQ-01	LED panel compatible with modular frame system wall.
	Floor outlet
	Furniture outlet
	Wall outlet
	Network access point
	Pendant lamp (see specification)
	Pendant lamp (see specification)
	Spot light (see specification)



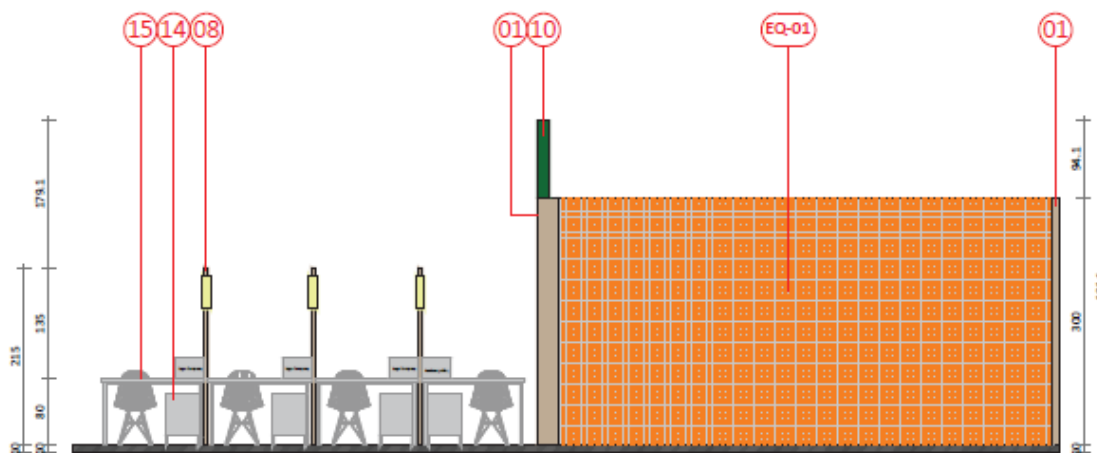
FRONTAL ELEVATION A



FRONTAL ELEVATION B



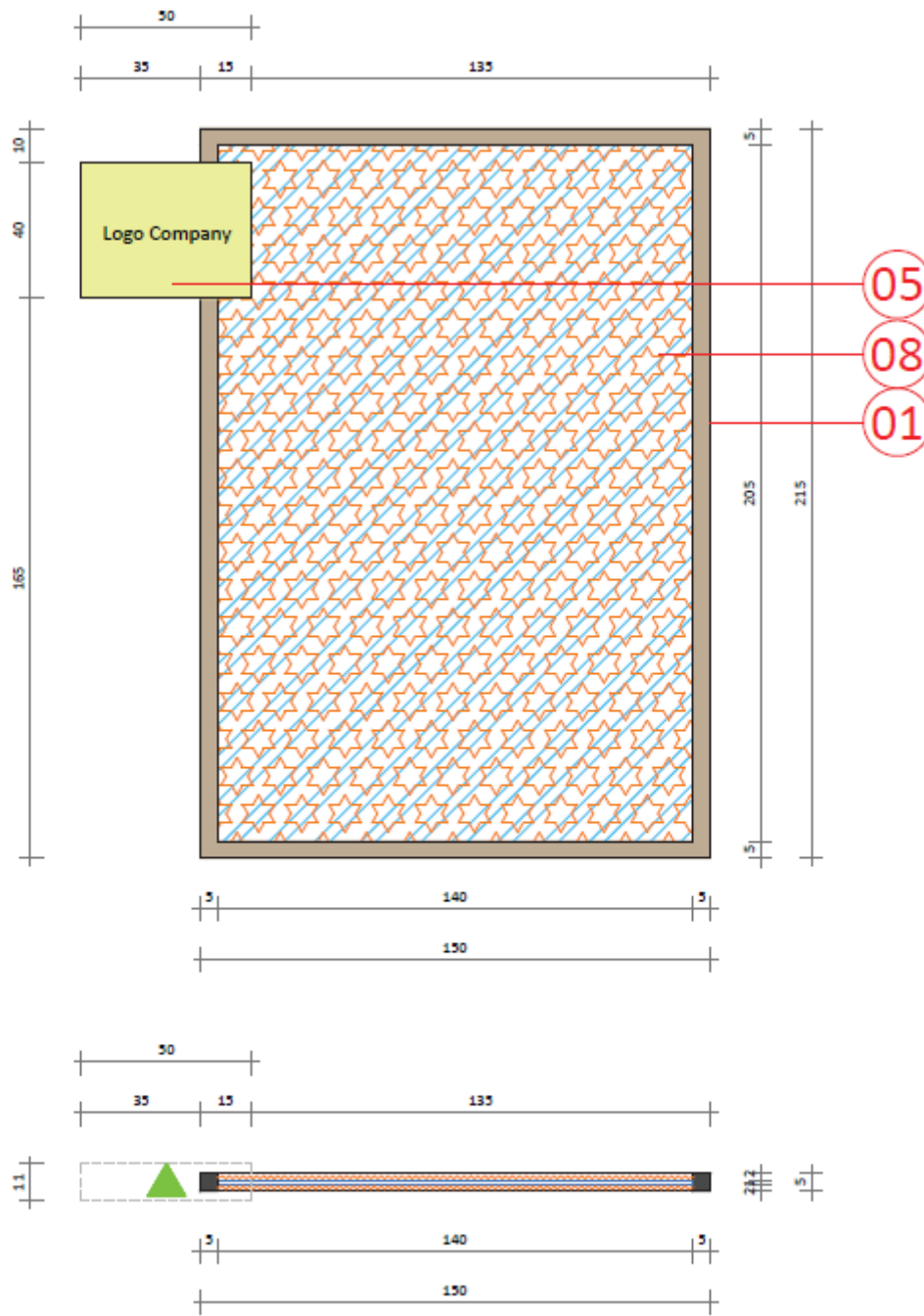
FRONTAL ELEVATION C



FRONTAL ELEVATION D

SPECIFICATIONS:

01	Modular system structure (preferably BeMatrix system, or similar) that uses in its structural system frame with aluminum profiles of at least 62mm wide and its superior multiples. Finishing cover in rigid panel must be fastened with velcro tape over the modular structure. Finishing cover in reforestation pinus plywood panel with varnish finishing or MDF sheet with colored melamin finishing.
02	Brise-soleil in modular system structure (preferably BeMatrix system, or similar) that uses in its structural system frame with aluminum profiles of at least 62mm wide and its superior multiples. Finishing cover in rigid panel must be fastened with velcro tape over the modular structure. Finishing cover in reforestation pinus plywood panel with varnish finishing or MDF sheet with colored melamin finishing.
03	Panel for visual communication in digital printed fabric covering with silicone border for attachment to the modular system.
04	Metal grid with pins capable of holding objects hanging over it.
05	Backlight illumination system.
06	Green wall with bulky artificial foliage compatible with the modular frame system wall.
07	Modular system structure (preferably BeMatrix system, or similar) that uses in its structural system frame with aluminum profiles of at least 62mm wide and its superior multiples. Finishing cover in rigid panel must be fastened with velcro tape over the modular structure. Finishing cover in glass or acrylic panels.
08	Modular system structure (preferably BeMatrix system, or similar) that uses in its structural system frame with aluminum profiles of at least 62mm wide and its superior multiples. Finishing cover in rigid panel must be fastened with velcro tape over the modular structure. Finishing in screens with acoustic protection with weft in printed electronic cutout adhesive on glass or acrylic panels.
09	Modular system structure (preferably BeMatrix system, or similar) that uses in its structural system frame with aluminum profiles of at least 62mm wide and its superior multiples. Finishing cover in rigid panel must be fastened with velcro tape over the modular structure. Finishing in screens with weft in printed electronic cutout adhesive on glass or acrylic panels.
10	Block letter with backlight integrated.
11	Block letter in electronic cutout.
12	Floor in reforestation pinus plywood panel with varnish finishing.
13	Floor in MDF sheets with colored melamin finishing.
14	Cabinet IKEA BEKANT Storage unit with smart lock, mesh white 41x61 cm
15	Wooden desk with white melamin finishing.
EQ-01	LED panel compatible with modular frame system wall.
	Floor outlet
	Furniture outlet
	Wall outlet
	Network access point
	Pendent lamp (see specification)
	Pendent lamp (see specification)
	Spot light (see specification)



Booth Partition

SPECIFICATIONS:

01	Modular system structure (preferably BeMatrix system, or similar) that uses in its structural system frame with aluminum profiles of at least 62mm wide and its superior multiples. Finishing cover in rigid panel must be fastened with velcro tape over the modular structure. Finishing cover in reforestation pinus plywood panel with varnish finishing or MDF sheet with colored melamin finishing.
02	Brise-soleil in modular system structure (preferably BeMatrix system, or similar) that uses in its structural system frame with aluminum profiles of at least 62mm wide and its superior multiples. Finishing cover in rigid panel must be fastened with velcro tape over the modular structure. Finishing cover in reforestation pinus plywood panel with varnish finishing or MDF sheet with colored melamin finishing.
03	Panel for visual communication in digital printed fabric covering with silicone border for attachment to the modular system.
04	Metal grid with pins capable of holding objects hanging over it.
05	Backlight illumination system.
06	Green wall with bulky artificial foliage compatible with the modular frame system wall.
07	Modular system structure (preferably BeMatrix system, or similar) that uses in its structural system frame with aluminum profiles of at least 62mm wide and its superior multiples. Finishing cover in rigid panel must be fastened with velcro tape over the modular structure. Finishing cover in glass or acrylic panels.
08	Modular system structure (preferably BeMatrix system, or similar) that uses in its structural system frame with aluminum profiles of at least 62mm wide and its superior multiples. Finishing cover in rigid panel must be fastened with velcro tape over the modular structure. Finishing in screens with acoustic protection with weft in printed electronic cutout adhesive on glass or acrylic panels.
09	Modular system structure (preferably BeMatrix system, or similar) that uses in its structural system frame with aluminum profiles of at least 62mm wide and its superior multiples. Finishing cover in rigid panel must be fastened with velcro tape over the modular structure. Finishing in screens with weft in printed electronic cutout adhesive on glass or acrylic panels.
10	Block letter with backlight integrated.
11	Block letter in electronic cutout.
12	Floor in reforestation pinus plywood panel with varnish finishing.
13	Floor in MDF sheets with colored melamin finishing.
14	Cabinet IKEA BEKANT Storage unit with smart lock, mesh white 41x61 cm
15	Wooden desk with white melamin finishing.
EQ-01	LED panel compatible with modular frame system wall.
	Floor outlet
	Furniture outlet
	Wall outlet
	Network access point
	Pendent lamp (see specification)
	Pendent lamp (see specification)
	Spot light (see specification)



Front view

Bar



Front view

Side view

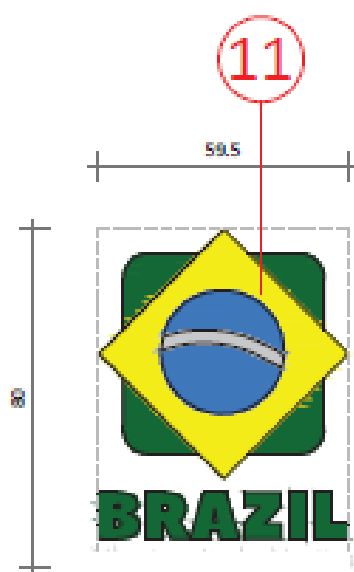
Brazil Logo 01



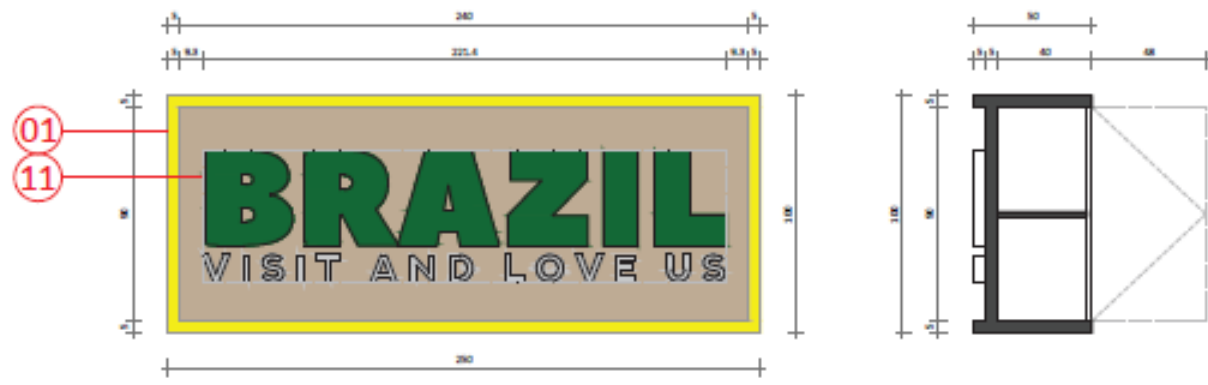
Front view

Side view

Brazil Logo 02

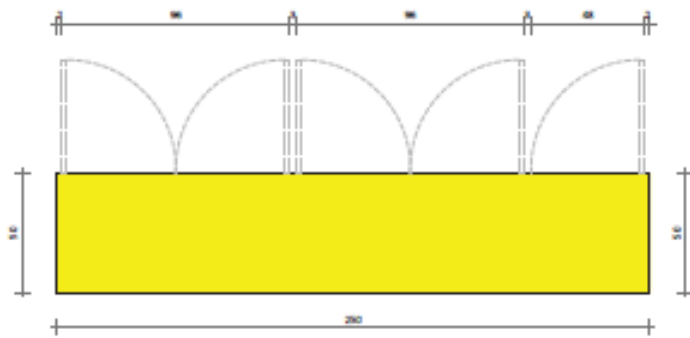


Brazil Flag Logo 01



Front view

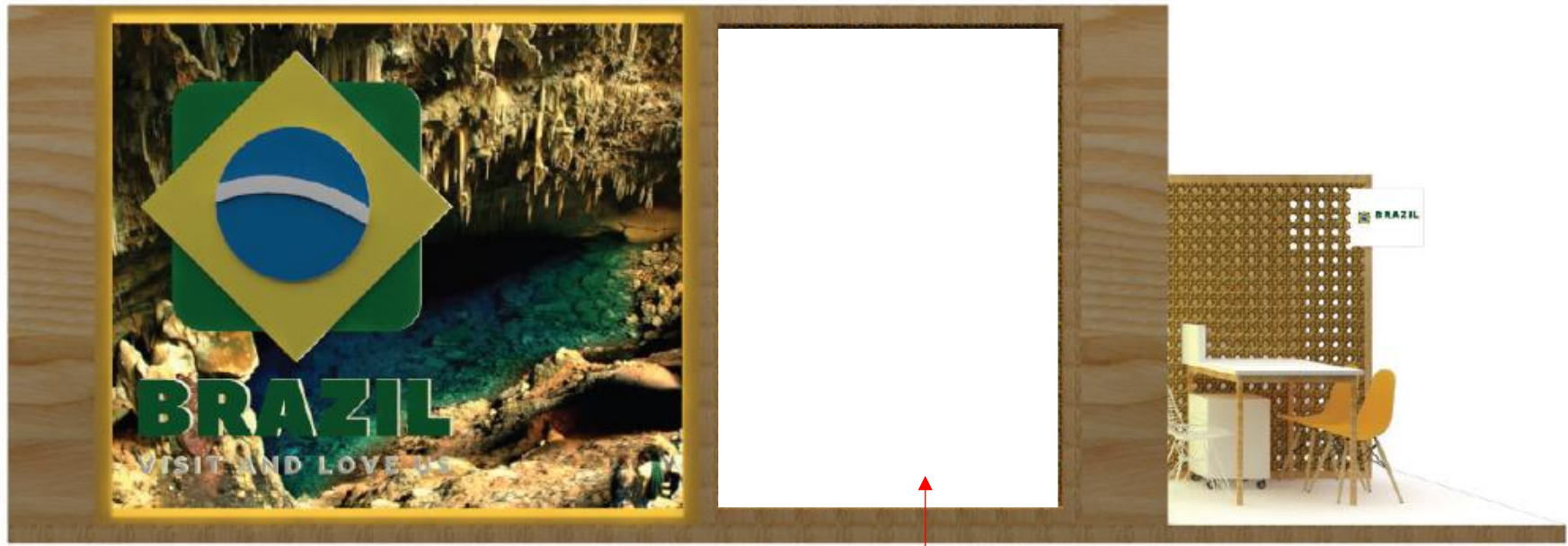
Side section



Superior view

External Infodex





DO NOT BUILD THIS PANEL
IT IS AN OPEN AREA
BUILD AN ACCESS RAMP



FOTO DEL PRESIDENTE DE BRASIL



BANDERA DE BRASIL



En Duralon 100 % poliéster, bordado, talle 0,90x1,28m. Mástil de aluminio con base de madeira, altura aproximada de 2,20m.